

Loudness Quality Logger



With the **LQL - Loudness Quality Logger**, RTW offers a logging console that collects data via network from various Touch-Monitor devices with activated Loudness and Logging Data Server licenses in order to provide an offline storage capability that goes along with some add on features.

The first version of the Loudness Quality Logger is a program for Windows OS based PC's. It provides logging of timecode

or realtime based loudness and TruePeak data from various TouchMonitors and audiogroups on these devices. Main and secondary limits may be applied and can be used to generate various alarms.

All status information of the device is stored with the logged data. Status overview, reports and data export is provided within the feature set of the LQL.



RTW
EYES ON YOUR AUDIO

Product Information

Loudness Quality Logger

The RTW TouchMonitor range is a high class series of audio monitoring devices used for various broadcasting applications. Part of the functionality of these products is to measure the loudness of incoming audio data. The result of the measurements is visualized for a lot of applications in realtime, but there is also a requirement of logging data over time.

Mainly the LQL – Loudness Quality Logger software consist of a kernel collecting and storing data in the background. A user interface is provided to connect and monitor the devices and for display of aquired data. The user interface itself consists of a main window giving an overview and additionally selectable detail windows.

Main Window

The main window lists the connected devices and audio groups. Logging status and Loudness/TP status are indicated by a kind of traffic light. This provides a quick overview and allows detection of a program that needs attention or intervention by an engineer.

The course of the measurement of an audio group being selected in the main window can be displayed in the optional selectable detail window with different scaling factors.

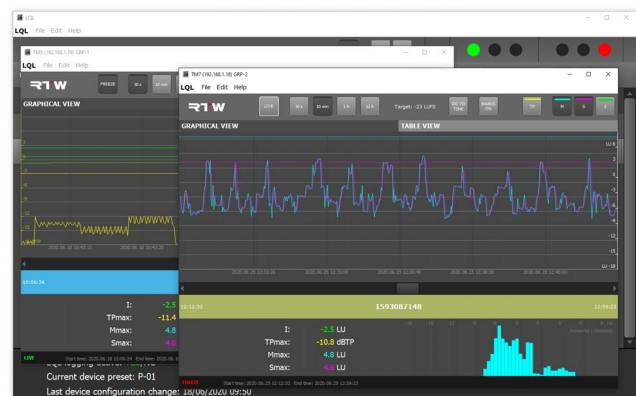
Detail Window

Up to four of the permanently captured values may be displayed graphically at the same time. The selection can be changed at any time. The numerical value of all parameters is displayed in the lower left section of the detail window. In the lower right section a diagram shows the statistical distribution of the Momentary values being measured („Momentary Statistics“). It is possible to open several detail windows side by side.



NO.	DEVICE	AUDIOGROUP	LOG?	STATUS LOG	LOUDNESS/TP STATUS
1	TM7 LIVE 192.168.1.26	RADIO INTERN	<input checked="" type="checkbox"/>	●●●●●	●●●●●
2	TM7 LIVE 192.168.1.26	RADIO ON AIR	<input checked="" type="checkbox"/>	●●●●●	●●●●●
3	TM7 STUDIO B 192.168.1.19	STEREO A85	<input checked="" type="checkbox"/>	●●●●●	●●●●●
4	TM7 STUDIO B 192.168.1.19	STEREO R128	<input checked="" type="checkbox"/>	●●●●●	●●●●●
5	TM9 REGIE 2 192.168.1.19	TT MIX 5.1	<input checked="" type="checkbox"/>	●●●●●	●●●●●
6	TM9 REGIE 2 192.168.1.19	TV MIX - R128	<input checked="" type="checkbox"/>	●●●●●	●●●●●
7	TM9 STUDIO A 192.168.1.18	5.1 DOWNMIX	<input checked="" type="checkbox"/>	●●●●●	●●●●●
8	TM9 STUDIO A 192.168.1.18	5.1 MIX - R128	<input checked="" type="checkbox"/>	●●●●●	●●●●●
9	TM9 STUDIO C 192.168.1.21	7.1 MIX	<input checked="" type="checkbox"/>	●●●●●	●●●●●
10	TM9 STUDIO C 192.168.1.21	PROGRAMM 2	<input checked="" type="checkbox"/>	●●●●●	●●●●●

LQL logging active: YES/NO
Current device preset: RAVENNA
Last device configuration change: 18/05/2020 09:49



© 08/2020 | All rights reserved. Changes without prior notice.
All other products and company names contained herein are ™ and ® of their respective holders.

PIQLQE02

RTW GmbH & Co. KG
Am Wassermann 25 | 50829 Koeln | Germany
Phone: +49 221. 70 913-0 | Fax: +49 221. 70 913-32
Internet: www.rtw.com | E-Mail: rtw@rtw.com

RTW
EYES ON YOUR AUDIO