

Device Installation Guide

Mounting Kit TM9-MA4U



Please carefully **read** the safety instructions, **understand** them and **act** as requested to prevent any hazards or not to violate any laws. **Observe** the recommendations of the Safety Information described in the operating manual of your device.

This guide describes the mounting of a TM9 OEM device (**20900OEM**) into 19"/4U mounting kit TM9-MA4U. It is also available in PDF file format the "member area" on our website: <https://www.rtw.com/en/service/manuals-software.html> (login).



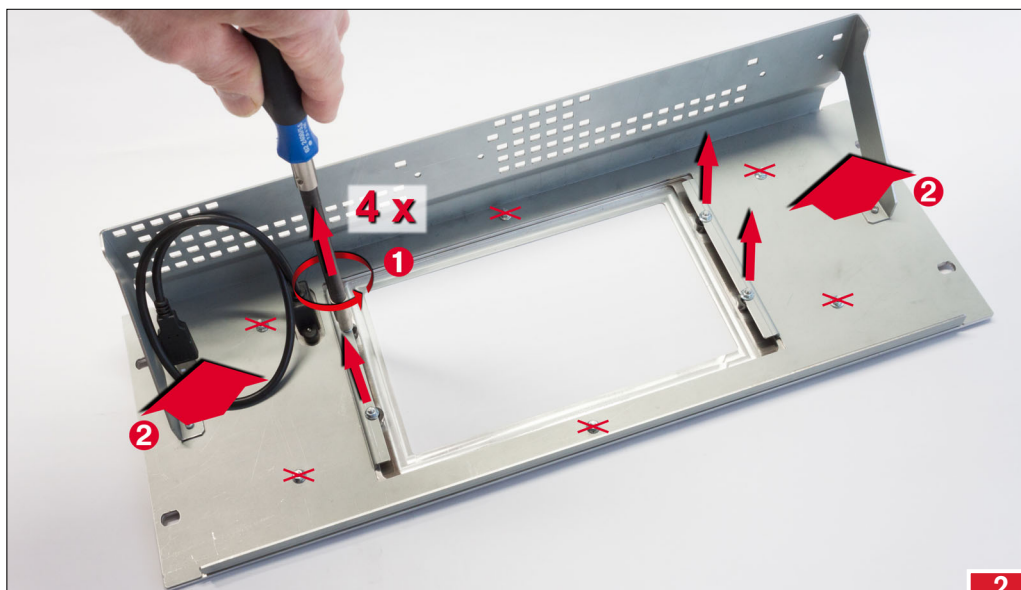
NOTE - When mounting, assure not to damage the device to be mounted especially its display and touch surface.

Required parts

- Mounting Kit TM9-MA4U as delivered (Carrier frame with mounted USB connector cable, front panel, 4 spacer sleeves, 4 knurled nuts)
- Smooth and soft cloth (not included in TM9-MA4U package)
- Hexagon socket wrench 5.5 mm (not included in TM9-MA4U package)
- Your TM9 OEM device (not included in TM9-MA4U package)

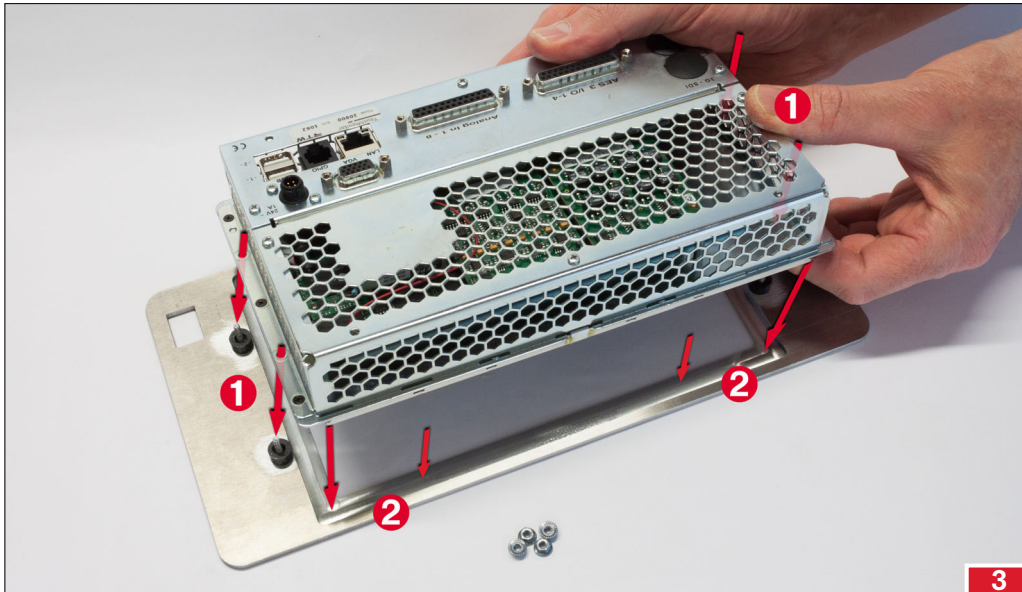
Mounting Sequence

1. Place the mounting kit face down and with its carrier plate pointing away from you on the smooth and soft cloth on the working bench.
2. Take the hexagon socket wrench and remove the four knurled nuts from the angled mounting strips (1). Only lift the carrier frame (2) and store it. Leave the front panel with the four spacer sleeves on the knurled nuts on the working bench.




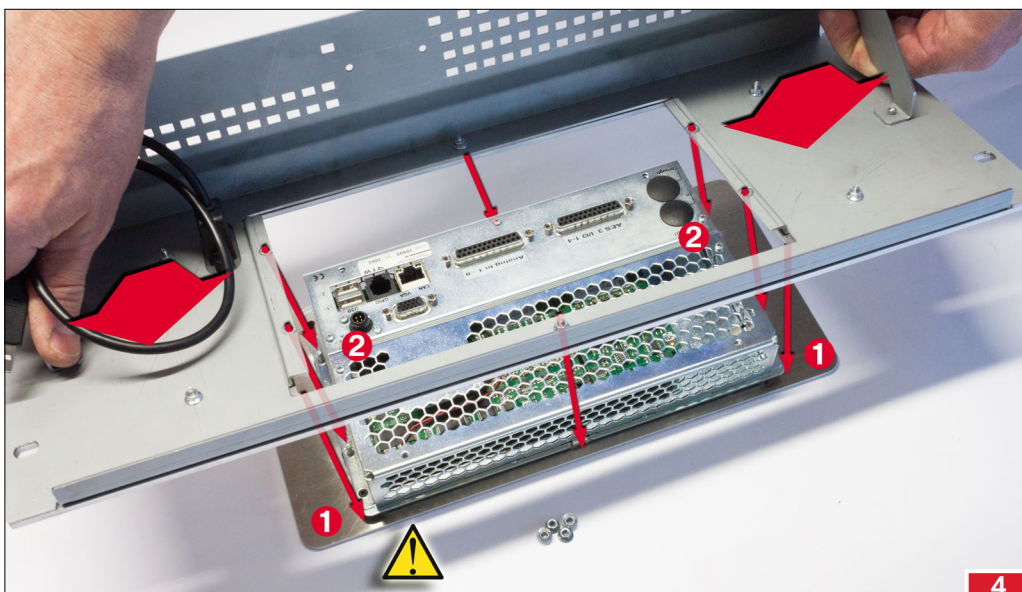
Mounting Sequence (continued)

3. Take your TM9 OEM device with the display face down and the connectors pointing away from you and put it on the threaded bolts (1). Take care about the display. It should fit to the milled recess of the front panel with a small gap all around (2).




4. When the device is placed well, take the 19"/4U carrier frame with its front face down and its carrier plate pointing away from you, move the cutout across the outer edges of the OEM device down to the front panel (1), and put the angled mounting strips on the threaded bolts (2).

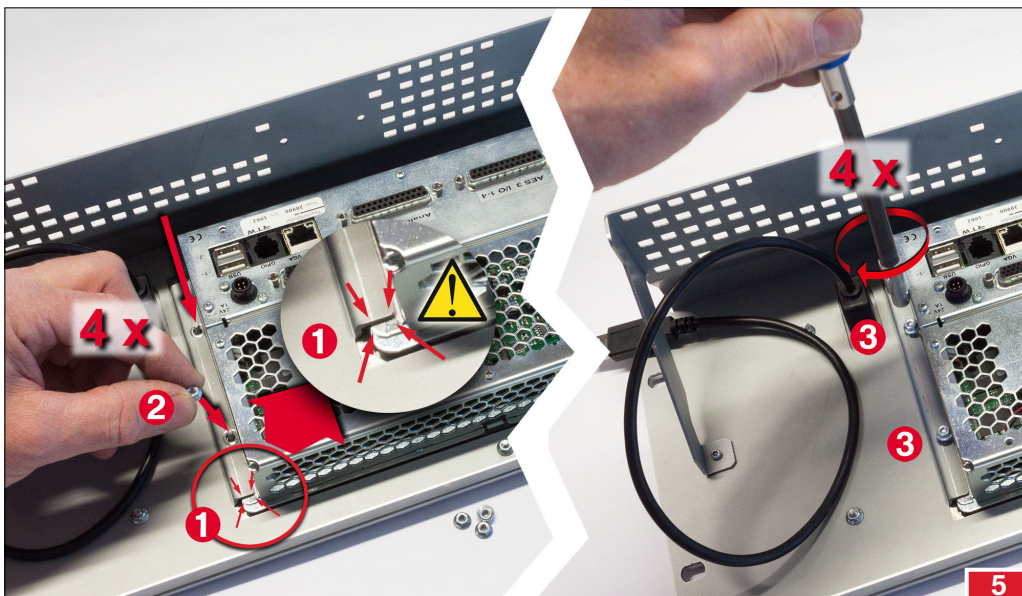
 **NOTE** - The device shall not be moved anymore.



Mounting Sequence (continued)

5. The angled mounting strips shall lie down on the housing edges of the device with no gap (1). Take care not to move the device anymore. Take the four knurled nuts and screw them on a bit to the threaded bolts (2). Check, that everything is correctly positioned. Finally, crosswise tighten them very carefully with the 5.5 mm hexagon socket wrench (3).

 **ATTENTION** - Avoid damage of the touch function and the display, especially glass breakage!



6. Take the USB-A connector of the mounted USB connector cable and put it into one of the USB sockets of the TM9 device.



Mounting Sequence (continued)

7. Install the mounting frame TM9-MA4U carrying your TM9 OEM device into your 19" rack with suitable screws (not included in the package).
 8. Connect your signal sources and all your other components to the appropriate connectors.
 9. Finally, carefully plug the 4-pin locking low voltage connector of the power supply into the 4-pin socket of the TM unit. Make sure, that the notch of the 4-pin locking low voltage connector exactly fits to the nib of the 4-pin socket.
 10. Connect the power supply to mains supply. The device will initiate its system startup sequence. After the boot-up the unit is ready for use.
-



© 04/2018 | Änderungen vorbehalten.